

Tool Rebels on bikes

Screwdriving tools made by Wera





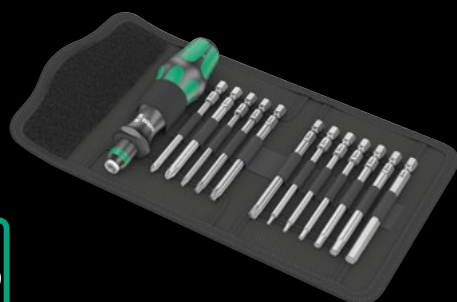
Bicycle Set 1



14-piece set, in a pouch; 1 Wera Bit Ratchet Zyklop Mini 1, drop-forged full steel design, suitable for 1/4" hex bits as per DIN ISO 1173-C 6.3 and E 6.3 and Wera series 1 and 4; can also be used with 1/4" sockets by using the Wera socket adaptor 870/1; 1 universal bit holder (100 mm), stainless steel, retaining ring, and strong permanent magnet; 10 bits, tough, for universal use; 1x 9502 tyre jack with bit mounting, 1x tyre jack with valve ejector.

05004170001		
8001 A	1x 1/4"x87,0	
3899/4/1	1x 1/4"x100	
851/1 Z PH	1x PH 2x25	
867/1 TORX®	1x TX 10x25; 1x TX 25x25	
840/1 Z Hex-Plus	1x 2,0x25; 1x 2,5x25; 1x 3,0x25; 1x 4,0x25; 1x 5,0x25; 1x 6,0x25; 1x 8,0x25	
9502	1x 105,0	
9503	1x 105,0	
K70	1x 50,0x70,0	

Bicycle Set 2



13-piece set, in a pouch; 1 816 R Kraftform bit-holding screwdriver handle with Rapidaptor quick-release chuck, suitable for 1/4" hex bits as per DIN ISO 1173-C 6.3 and E 6.3 and Wera series 1 and 4; 12 bits, 89 mm long, tough, for universal use

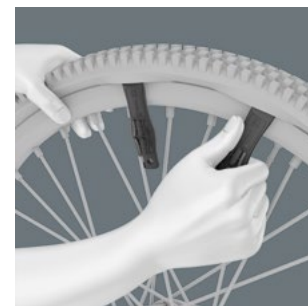
05004171001		
816 R	1x 1/4"x119	
851/4 Z PH	1x PH 1x89; 1x PH 2x89	
867/4 Z TORX®	1x TX 10x89; 1x TX 20x89; 1x TX 25x89; 1x TX 30x89	
840/4 Z Hex-Plus	1x 2,0x89; 1x 2,5x89; 1x 3,0x89; 1x 4,0x89; 1x 5,0x89; 1x 6,0x89	
K70	1x 50,0x70,0	

The tool set to go



The Bicycle Set 1 contains tools for the most popular screw profiles on road bikes, mountain bikes and e-bikes. Thanks to the compact textile-folding pouch, the set is also the ideal companion for cycling tours.

Lever tyre off the rim safely



With the glass fibre reinforced plastic tyre jacks, the tyres can be safely levered off the rim without damaging the rim. Lift off of the rim with one tyre jack, hook into a spoke and pull off the tyre with the second tyre jack. The two tyre jacks can be clicked together and are therefore not lost individually.

The 9502 tyre jack with bit mounting



The 1/4" hexagon mounting in the 9502 tyre jack allows fixing of French valves on the side flats. In addition, a 1/4" bit can be inserted to use for light screw connections.

The 9503 tyre jack with valve ejector to deflate



The 9503 tyre jack is both valve ejector and deflater.



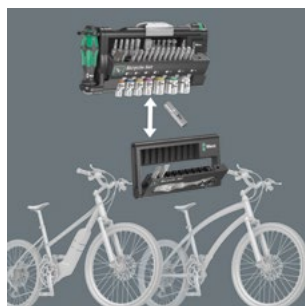
Bicycle Set 3



41-piece set

28 bits, 1x 813 hand-holder suitable for mounting bits with 1/4" external hexagon drive as per DIN ISO 1173-C 6.3 and Wera connection series 1, 1x Rapidaptor bit holder, 1x 870/1 adapter (1/4" hexagon to 1/4" square head), 7 sockets (1/4"). 1x Wera Zyklus Mini 1 bit ratchet, drop-forged solid steel design; suitable for mounting bits with 1/4" external hexagon drive as per DIN ISO 1173-C 6.3 and E 6.3 and Wera connection series 1 and 4, inserting 1/4" sockets also possible by using the 870/1 Wera adapter; 1x 9502 tyre jack with bit mounting, 1x tyre jack with valve ejector. 1x Bit-Check, empty, for reduced equipment, e.g. to take on bike tours. 1 robust textile pouch for neat storage.

Bicycle Set 3



Bicycle Set 3 is a practical assortment for the independent execution of assembly work and repairs on road bikes, mountain bikes and e-bikes. Especially useful: a Bit-Check (empty) is also included, which can be equipped individually with tools on the way: less weight on bike rides.

05004172001		
8001 A	1x 1/4"x87,0	
813	1x 1/4"x78	
889/4/1 K	1x 1/4"x50	
870/1	1x 1/4"x25 ¹⁾	
8790 HMA	1x 5,5x23,0; 1x 6,0x23,0; 1x 7,0x23,0; 1x 8,0x23,0; 1x 10,0x23,0; 1x 13,0x23,0; 1x 15,0x23,0	
851/1 TZ PH	1x PH 1x25; 2x PH 2x25; 1x PH 3x25	
867/1 TZ TORX®	1x TX 10x25; 1x TX 15x25; 2x TX 20x25; 2x TX 25x25; 1x TX 27x25; 1x TX 30x25; 1x TX 40x25	
800/1 TZ	1x 0,5x4,0x25; 1x 0,6x4,5x25; 1x 1,0x5,5x25	
840/1 Z Hex-Plus	1x 2,0x25; 1x 2,5x25; 1x 3,0x25; 1x 4,0x25; 1x 5,0x25; 1x 6,0x25; 1x 8,0x25	
842/1 Z	1x 2,5x25; 1x 3,0x25; 1x 4,0x25; 1x 5,0x25; 1x 6,0x25	
9502	1x 105,0	
9503	1x 105,0	
K120	1x 50,0x120,0	

¹⁾ With friction ball; for manual nut spinner sockets



Bicycle Set 4



9-piece set in pouch

Application: Hexagonal socket screws and TORX® screws

Design: BlackLaser surface, durable plastic sleeve. The contrasting inscriptions on the colour-coded sleeves mean that it is easy to recognise the correct sizes and this makes it simpler to find the right tool.

Tip: 950 SPKL HF: Hex-Plus, ball-end hexagon on long arm, with holding function for hexagonal socket screws; 950 SPKL: Hex-Plus, ball-end hexagon on long arm, without holding function; 967 SXL HF: With holding function for TORX® screws to Acument Intellectual Properties specification.

05004173001		
○	950 SPKL Multicolour	1x 2,0x101; 1x 2,5x112
○	950 SPKL HF Multicolour	1x 3,0x123; 1x 4,0x137; 1x 5,0x154; 1x 6,0x172; 1x 8,0x195
⊗	967 SXL TORX® HF Multicolour	1x TX 10x112; 1x TX 25x154
	K70	1x 50,0x70,0



Hex-Plus



Hexagon screws can endure a problem because the contact surfaces delivering the power from the conventional tool, is transferred to the screw via very small surface areas. The consequence: the screw can become damaged (rounding out). Hex-Plus tools have a greater contact surface that prevents this from happening! At the same time, as much as 20 % more torque can be applied. Good to know: Hex-Plus tools fit into every standard hexagon socket screw!



L-keys with retaining function for hexagon socket screws



The clamping of the screw is achieved by a flexible locking ball. The holding function is especially helpful in confined, hard-to-reach spaces, where there is no room for a second hand to secure the screw on the tool.



Compact shape



With its compact handle shape and the short blade, the Kraftform Stubbies are particularly suitable for working in confined screwdriving situations.

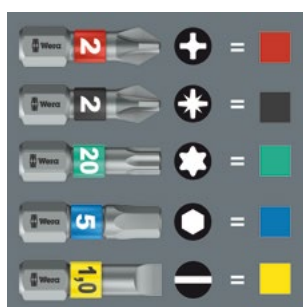
Swiveling bit magazine



The swiveling bit magazine allows for the bits to be removed easily in almost any situation and cannot be lost. The bits are safely stored.



"Take it easy" tool finder



"Take it easy" tool finder with colour coding according to profiles and size stamp – for simple and rapid accessing of the required tool.



Bicycle Set 5



Application: Suitable for bits with 1/4" external hexagon drive as per DIN ISO 1173-C 6.3 and Wera connection series 1

Design: Ratchet, fine toothing for a low return angle, reversible ring (right, fixed, left); 1/4" hexagonal socket mounting, magnetic; 7 bits; stainless steel to prevent extraneous rust, torsion shape against premature wear. Take it easy tool finder: With size stamping and colour coding by tip to help you find the required bit easily.

Handle: Kraftform Stubby with anti-roll protection, multi-component, integrated magazine

05004185001	
⊕	3851/1 TS PH 1x PH 1x25
⊗	3867/1 TS 1x TX 10x25; 1x TX 25x25 TORX®
○	3840/1 TS 1x 2,5x25; 1x 3,0x25; 1x 4,0x25; 1x 5,0x25



Bicycle Set 6



Application: Hexagonal socket screws, with holding function at the long arm from size 3; TORX®, with holding function at the long arm for TORX® screws as per Acument Intellectual Properties specifications

Design: With Take it easy tool finder: Colour coding by profile (blue = hexagonal socket, green = TORX®) and size stamping. 10-piece set in a box, plus 1 rack

05004174001		
○	454	1x 2,5x100
○	454 HF	1x 3x100; 1x 4x150; 1x 5x150; 1x 6x200; 1x 8x200; 1x 10x200
⊗	467 TORX® HF	1x TX 10x100; 1x TX 20x100; 1x TX 25x100

Bicycle Set 7



27-piece set; in surface-friendly, compact and extremely robust textile box. Small size and low weight for better mobility.

1 Zyklop Speed ratchet with $\frac{3}{8}$ " drive, 10 Zyklop sockets, 2 Zyklop bit sockets with 30mm and extra slim profile area for better accessibility in tight workspaces, with Take it easy tool finder: Colour coding by size. 1 Zyklop extension (short) with fast-rotating sleeve, 1 Wobble extension, 1 bit adapter, 1 connection part $\frac{3}{8}$ " external square head to $\frac{1}{2}$ " external square head, 10 bits, tough, for universal use. Incredibly compact set arrangement for many tools in a tight space thanks to the highly robust and durable textile box. Can be placed in an upright position for clearly arranged storage in the workshop shelf. Additional surface protection thanks to textile outer material. Low weight and small size for better mobility.

05004175001		
□	8000 B	1x $\frac{3}{8}$ "x199,0
●	8790 HMB	1x 6,0x29,0; 1x 7,0x29,0; 1x 8,0x29,0; 1x 9,0x29,0; 1x 10,0x29,0; 1x 11,0x29,0; 1x 12,0x29,0; 1x 13,0x29,0; 1x 14,0x29,0
●	8790 HMB Deep	1x 15,0x64,0
○	8740 B	1x 8,0x100,0; 1x 10,0x100,0
□	8794 B	1x $\frac{3}{8}$ "x76,0
●	8784 B1	1x $\frac{1}{4}$ "x $\frac{3}{8}$ "x44,0
●	8794 SB	1x $\frac{3}{8}$ "x125,0
□	781 B	1x 781 B/C, $\frac{1}{2}$ "x36,0x $\frac{3}{8}$ "
○	840/4 Z Hex-Plus	1x 3,0x50; 1x 4,0x50; 1x 5,0x50; 1x 6,0x50
✳	867/4 Z TORX®	1x TX 10x50; 1x TX 15x50; 1x TX 20x50; 1x TX 25x50; 1x TX 27x50; 1x TX 30x50

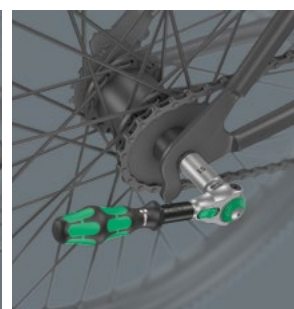


Pivots freely



The ratchet head of the Zyklop Speed pivots freely and can be locked into any defined position by using the slide switch that is positioned on either side. It is even possible to work in very confined and difficult-to-access areas with enhanced hand clearance. The predefined locking at 0°, 15° and 90°, both to the right and left, ensure safe working without any slipping of the ratchet head.

The ratchet head of the Zyklop Speed pivots freely and can be locked into any defined position by using the slide switch that is positioned on either side. It is even possible to work in very confined and difficult-to-access areas with enhanced hand clearance. The predefined locking at 0°, 15° and 90°, both to the right and left, ensure safe working without any slipping of the ratchet head.



Bicycle Set 8



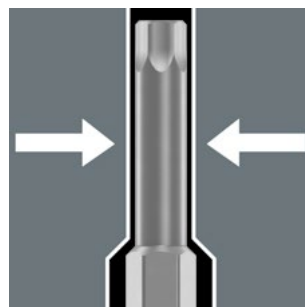
7-piece set

Folding pouch with 100mm/107mm long bit sockets

7 Zyklop bit sockets with $\frac{3}{8}$ " drive; with 30mm and extra slim profile area for better accessibility in tight workspaces. Take it easy tool finder: With colour coding by size as well as size stamping - to help you find the required bit socket quickly and easily.

05004176001		
8767 B	1x TX 25x107,0; 1x TX 30x107,0	
8740 B	1x 4,0x107,0; 1x 5,0x107,0; 1x 6,0x107,0; 1x 8,0x100,0; 1x 10,0x100,0	
K120	1x 50,0x120,0	

30mm long and extra slim profile area



The bit sockets have a 30mm long and extra slim profile area. This makes even couplings in tight work spaces easily accessible.



Bicycle Set 9



9 bits; stainless steel to prevent extraneous rust, torsion shape against premature wear. 1x Wera Zyklop Mini 1 bit ratchet, drop-forged solid steel design; suitable for mounting bits with $\frac{1}{4}$ " external hexagon drive as per DIN ISO 1173-C 6.3 and E 6.3 and Wera connection series 1 und 4; inserting $\frac{1}{4}$ " sockets also possible by using the 870/1 Wera adapter

05004177001		
8001 A	1x $\frac{1}{4}$ "x87,0	
3851/1 TS PH	1x PH 2x25	
3867/1 TS TORX®	1x TX 10x25; 1x TX 25x25	
3840/1 TS	1x 2,0x25; 1x 2,5x25; 1x 3,0x25; 1x 4,0x25; 1x 5,0x25; 1x 6,0x25	



Stainless Steel Bits



Wera stainless steel bits are manufactured out of stainless steel so unsightly rust can be avoided. The stainless steel bits from Wera are vacuum ice-hardened and have the hardness and strength needed for screw connections. There are no limitations to the industrial applications they are suitable for.

Is such a small tool sufficiently resilient?



The Zyklop Mini 1 can withstand at least 65 Nm. That is far more power than can normally be transferred to such a small tool.



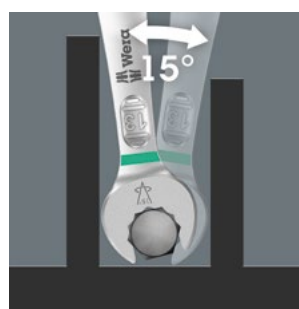
6003 Joker Pedal



The extra thin pedal ring spanner (6003 Joker 15 Pedal) is ideal for narrow installation spaces.



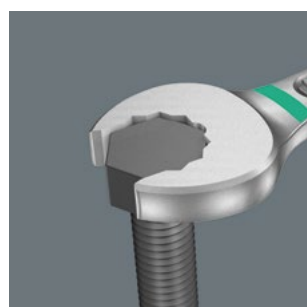
For very tight spaces



The Joker 6003 ring spanner with its special mouth geometry – mouth side pivoted by 7.5° and the double hexagon profile – doubles the placement possibilities when repeatedly turning the wrench 180° around the longitudinal axis. Bolts and screw heads can be "accessed" every 15°. The

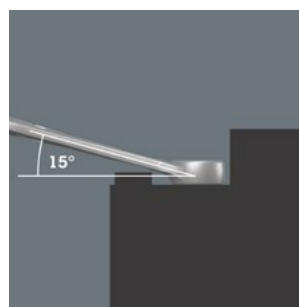
Joker 6003 will automatically find the respective placement point after every turn.

Double-hex geometry



The double hexagon geometry on the mouth and ring sides secures the positive connection with the screw head or bolt and reduces the risk of slipping.

Joker 6003: Angled ring side



The ring side is angled at 15° to the tool axis to prevent injury.

Bicycle Set 10



Ring spanner set, mouth side pivoted by 7.5°

5-piece set

In robust pouch

05004178001	
6003 Joker	1x 8x115; 1x 9x120; 1x 10x125; 1x 13x160
6003 Joker Pedal	1x 15x174
K120	1x 50,0x120,0

Bicycle Set 12



- Particularly suitable for narrow screwdriving situations on the bike
- Joker 6003 pedal size 15 with flat mouth to mount and dismount pedals
- Joker 6003 size 9 for use in switchgears (bicycle gearshift)

Ring spanner set, mouth side pivoted by 7.5°

12-piece set

In robust pouch

05004181001	
6003 Joker	1x 6x105; 1x 7x110; 1x 8x115; 1x 9x120; 1x 10x125; 1x 11x135; 1x 12x148; 1x 13x160; 1x 14x167; 1x 16x182; 1x 17x190
6003 Joker Pedal	1x 15x174

Bicycle Set 11



Application: Suitable for bits with 1/4" external hexagon drive as per DIN ISO 1173-C 6.3 and Wera connection series 1

Design: Bit holder with strong permanent magnet; 7 bits; stainless steel to prevent extraneous rust, torsion shape against premature wear. Take it easy tool finder: With size stamping and colour coding by tip to help you find the required bit easily.

Handle Kraftform Stubby with anti-roll protection, multi-component, integrated magazine

05004179001	
+	3851/1 TS PH 1x PH 1x25
⊗	3867/1 TS 1x TX 10x25; 1x TX 25x25 TORX®
○	3840/1 TS 1x 2,5x25; 1x 3,0x25; 1x 4,0x25; 1x 5,0x25

Handle with integrated bit magazine



The handle can be opened and thus gives access to the six bits contained in the magazine.

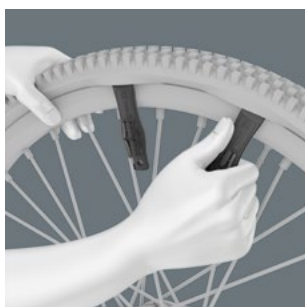
Bit holder with magnet



The magnet ensures that the bit is securely seated in the holder.

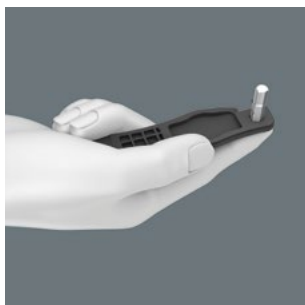


Lever tyre off the rim safely



With the glass fibre reinforced plastic tyre jacks, the tyres can be safely levered off the rim without damaging the rim. Lift off of the rim with one tyre jack, hook into a spoke and pull off the tyre with the second tyre jack. The two tyre jacks can be clicked together and are therefore not lost individually.

The 9502 tyre jack with bit mounting



The $\frac{1}{4}$ " hexagon mounting in the 9502 tyre jack allows fixing of French valves on the side flats. In addition, a $\frac{1}{4}$ " bit can be inserted to use for light screw connections.

The 9503 tyre jack with valve ejector to deflate



The 9503 tyre jack is both valve ejector and deflater.

Bicycle Set 13



2-piece set, 1x 9502 tyre jack with bit mounting, 1x tyre jack with valve ejector.

05004184001		
9502	1x 105,0	
9503	1x 105,0	

Bicycle Big Pack 1



14-piece screwdriver set for bicycle applications

2x 354 Hex-Plus screwdrivers for hexagonal socket screws, 5x 454 HF T-handle screwdrivers with long and short arm with holding function for hexagonal socket screws at the long arm, 1x 367 screwdriver for TORX® screws, 2x T-handle screwdrivers with long and short arm with holding function for TORX® screws at the long arm as per Acument Intellectual Properties specifications, 2x 350 PH screwdrivers with Lasertip for Philips-head screws; with Take it easy tool finder: Colour coding by profile and size stamping, 2x 932 A chiseldrivers with pound-thru hexagon blade and integrated impact cap. 2 racks for storage.

05004190001		
○	354 Hex-Plus	1x 2,0x75; 1x 2,5x75
○	454 HF	1x 3x100; 1x 4x150; 1x 5x150; 1x 6x200; 1x 8x200
⊕	367 TORX®	1x TX 10x80
⊕	467 TORX® HF	1x TX 20x100; 1x TX 25x200
⊖	932 A	1x 1,0x5,5x100; 1x 1,2x7,0x125
⊕	350 PH	1x PH 1x80; 1x PH 2x100

Second arm



The additional short arm, which emerges laterally from the handle, allows the transmission of extremely high torques by using the long arm as a lever.



Screwdrivers 350 PH: With Lasertip



A precisely-focused laser creates a sharp-edged surface structure. This laser treatment results in an edge hardness of up to 1000 HV 0.3. Wera Lasertip "bites" itself into the screw head and prevents any slips out of the recess.



Bicycle Set Torque 1, 2.5-25 Nm



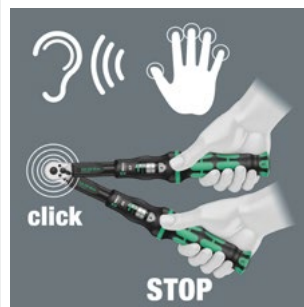
16-piece set; in a surface protecting, compact and extremely robust textile box; low volume and weight for simplified mobility.

1 Click-Torque torque wrench A 5 with $\frac{1}{4}$ " square drive, covering a range of 2.5 Nm-25 Nm, accuracy $\pm 4\%$ of the set value, as per DIN EN ISO 6789-1: 2017-07, for clockwise torque control, reversible ratchet, 45 teeth, easy setting and saving of the desired torque value, with audible and tactile locking when the scale values are reached (fine scale only in Newton meters), audible and tactile release mechanism when the set torque value is reached, ergonomic 2-component handle, 4 Zyklop sockets, with $\frac{1}{4}$ " drive, 4 Zyklop bit sockets for TORX® screws, with $\frac{1}{4}$ " drive, 7 bit sockets for hexagon socket screws with $\frac{1}{4}$ " drive with holding function; Take it easy tool finder: Colour coding to enable the desired bit socket to be easily selected

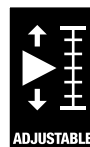
05004180001	
	Click-Torque 1x $\frac{1}{4}$ ", 2,5-25 Nm
	A 5
8790 HMA	1x 10,0x23,0; 1x 13,0x23,0; 1x 14,0x23,0; 1x 15,0x23,0
8767 A	1x TX 10x28,0; 1x TX 20x28,0; 1x TX 25x28,0; 1x TX 30x28,0
8740 A HF	1x 3,0x28,0; 1x 4,0x28,0; 1x 5,0x28,0; 1x 5,0x100,0; 1x 6,0x28,0; 1x 6,0x100,0; 1x 8,0x28,0
K240	1x 50,0x240,0



Torque wrench with release mechanism



When the set torque value is reached, an audible and tactile mechanism triggers.



Simple setting of the torque wrench



With audible and tactile clicks when adjusting the scale values.

Series 7400 Kraftform adjustable torque screwdrivers (0.1-3.0 Nm) with Rapidaptor quick-release chuck



Application: Suitable for 1/4" DIN ISO 1173-C 6.3 and E 6.3 hexagon insert bits and Wera Series 1 and 4

Design: Rapidaptor rapid-in, rapid-out, rapid-spin, chuck-all and single-hand technology

Accuracy: $\pm 6\%$ (DIN EN ISO 6789). Numerical torque valuescale. Reliable slipping mechanism and acoustic signal when reaching the set torque.

Handle: Kraftform with non-roll feature, multi-component

	Art.No.	Nm	Nm	mm	mm	mm	mm
05074770001 ¹⁾	7430	1/4"	0,10-0,34	0,015	89	142	5 7/16"
05074772001 ¹⁾	7431	1/4"	0,30-1,00	0,05	89	142	5 7/16"
05074774001 ¹⁾	7432	1/4"	0,90-1,50	0,05	89	142	5 7/16"
05074700001	7440	1/4"	0,3-1,2	0,05	105	155	6"
05074701001	7441	1/4"	1,2-3,0	0,10	105	155	6"

¹⁾ With attachable magnifying glass, dramatically improving visibility.



Click-Torque A 5 torque wrench with reversible ratchet, 2.5-25 Nm



Application: For clockwise torque-control

Precision: $\pm 4\%$ of set value, as per DIN EN ISO 6789-1: 2017-07

Design: With 1/4" square drive, reversible ratchet, 45 teeth; easy setting and saving of the desired torque value, with audible and tactile locking when the scale values are reached (fine scale only in Newton meters), audible and tactile release mechanism when the set torque value is reached

Handle: Ergonomic 2-component handle

	Nm	Nm	lbf. ft.	mm	mm	mm	mm	mm	mm	mm	mm	mm	mm
05075604001	1/4"	2,5-25	0,10	1-18	290	121	42	25	11,5	11 27/64"	4 49/64"	1 21/32"	1" 7/16"

Click-Torque A 6 torque wrench with reversible ratchet, 2.5-25 Nm



Application: For clockwise torque-control

Precision: $\pm 4\%$ of set value, as per DIN EN ISO 6789-1: 2017-07

Design: With $\frac{1}{4}$ " hex drive, reversible ratchet, 45 teeth; easy setting and saving of the desired torque value, with audible and tactile locking when the scale values are reached (fine scale only in Newton meters), audible and tactile release mechanism when the set torque value is reached

Handle: Ergonomic 2-component handle

		Nm	Nm	lbf. ft.	mm	mm	mm	mm	mm	mm	mm	mm	mm	mm
05075605001	$\frac{1}{4}$ "	2,5-25	0,10	1-18	290	121	42	25	11,5	11 $\frac{27}{64}$ "	4 $\frac{49}{64}$ "	1 $\frac{21}{32}$ "	1"	$\frac{7}{16}$ "

Click-Torque B 1 torque wrench with reversible ratchet, 10-50 Nm



Application: For clockwise torque-control

Precision: $\pm 3\%$ of set value, as per DIN EN ISO 6789-1: 2017-07

Design: With $\frac{3}{8}$ " square drive, reversible ratchet, 45 teeth; easy setting and saving of the desired torque value, with audible and tactile locking when the scale values are reached (fine scale only in Newton meters), audible and tactile release mechanism when the set torque value is reached

Handle: Ergonomic 2-component handle

		Nm	Nm	lbf. ft.	mm	mm	mm	mm	mm	mm	mm	mm	mm	mm
05075610001	$\frac{3}{8}$ "	10-50	0,25	8-36	360	140	47	35	16,5	14 $\frac{11}{64}$ "	5 $\frac{33}{64}$ "	1 $\frac{27}{32}$ "	1 $\frac{3}{8}$ "	$\frac{5}{8}$ "

Click-Torque A 6 Set 1, 2.5-25 Nm



20-piece set; in a surface protecting, compact and extremely robust textile box; low volume and weight for simplified mobility.

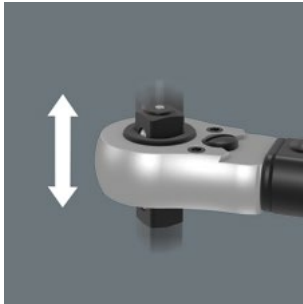
1 Click-Torque A 6 torque wrench with $\frac{1}{4}$ " hexagon drive, covering a range of 2.5 Nm-25 Nm, accuracy $\pm 4\%$ of the set value, as per DIN EN ISO 6789-1: 2017-07, for clockwise torque control, reversible ratchet, 45 teeth, easy setting and saving of the desired torque value, with audible and tactile locking when the scale values are reached (fine scale only in Newton meters), audible and tactile release mechanism when the set torque value is reached, ergonomic 2-component handle, 6 Zyklop sockets, 1 adapter $\frac{1}{4}$ " hexagon to $\frac{1}{4}$ " square, 1 Zyklop extension with free-turning sleeve, short, 11 bits

05130110001														
	Click-Torque A 6	1x $\frac{1}{4}$ "	2,5-25 Nm											
	851/4 TZ PH	1x PH 2x50												
	867/4 Z	1x TX 15x50; 1x TX 20x50; 1x TX 25x50; 1x TX 27x50; 1x TX 30x50; 1x TX 40x50												
	840/4 Z Hex-Plus	1x 3,0x50; 1x 4,0x50; 1x 5,0x50; 1x 6,0x50												
	870/1	1x $\frac{1}{4}$ "x25 ¹⁾												
	8794 SA	1x $\frac{1}{4}$ "x75,0												
	8790 HMA	1x 6,0x23,0; 1x 7,0x23,0; 1x 8,0x23,0; 1x 10,0x23,0; 1x 12,0x23,0; 1x 13,0x23,0												
	K240	1x 50,0x240,0												

¹⁾ With friction ball; for manual nut spinner sockets

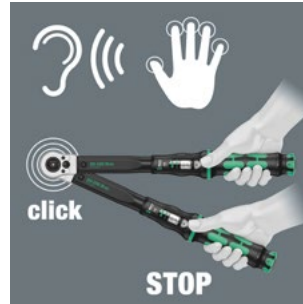


For right and left direction



The Click-Torque wrenches Push R/L are suitable for clockwise and anti-clockwise torque-control. Very smooth change of direction thanks to captive square head insert.

Release mechanism



When the set torque value is reached, an audible and tactile mechanism triggers.

Click-Torque C 2 Push R/L adjustable torque wrench for clockwise and anti-clockwise torque-control, 20-100 Nm



Application: For clockwise and anti-clockwise torque-control

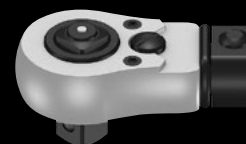
Precision: Precise to $\pm 3\%$ of the set value, as per DIN EN ISO 6789-1:2017-07

Design: With $\frac{1}{2}$ " square head drive with socket locking, square head insert to change the tightening direction, fine-teethed ratchet mechanics, 45 teeth; easy setting and saving of the desired torque, with audible and tactile locking when the scale values are reached (fine scale only in Newton meters), audible and tactile release mechanism when the torque value is reached

Handle: Ergonomic 2-component handle

		Nm	Nm	lbf. ft.	mm	mm	mm	mm	mm	mm	mm	mm	mm	mm	mm
05075625001	$\frac{1}{2}$ "	20-100	0,5	15-73	405	140	47	43	18,5	15 $\frac{15}{16}$ "	5 $\frac{33}{64}$ "	1 $\frac{27}{32}$ "	1 $\frac{11}{16}$ "	$\frac{45}{64}$ "	

Click-Torque C 3 Push R/L adjustable torque wrench for clockwise and anti-clockwise torque-control, 40-200 Nm



Application: For clockwise and anti-clockwise torque-control

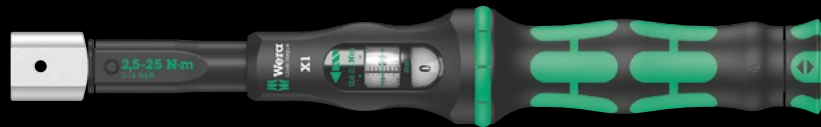
Precision: Precise to $\pm 3\%$ of the set value, as per DIN EN ISO 6789-1:2017-07

Design: With $\frac{1}{2}$ " square head drive with socket locking, square head insert to change the tightening direction, fine-teethed ratchet mechanics, 45 teeth; easy setting and saving of the desired torque, with audible and tactile locking when the scale values are reached (fine scale only in Newton meters), audible and tactile release mechanism when the torque value is reached

Handle: Ergonomic 2-component handle

		Nm	Nm	lbf. ft.	mm	mm	mm	mm	mm	mm	mm	mm	mm	mm	mm
05075626001	$\frac{1}{2}$ "	40-200	1,0	30-146	510	140	47	43	18,5	20 $\frac{5}{64}$ "	5 $\frac{33}{64}$ "	1 $\frac{27}{32}$ "	1 $\frac{11}{16}$ "	$\frac{45}{64}$ "	

Click-Torque X 1 torque wrench for insert tools, 2.5-25 Nm



Application: For right and left-handed use

Precision: $\pm 4\%$ of set value, as per DIN EN ISO 6789-1: 2017-07

Design: For 9x12 mm interchangeable insert tools; easy setting and saving of the desired torque value, with audible and tactile locking when the scale values are reached (fine scale only in Newton meters), audible and tactile release mechanism when the set torque value is reached

Handle: Ergonomic 2-component handle

		Nm	Nm	lbf. ft.	mm	mm	mm	mm	mm	mm	mm	mm	mm	mm	mm
05075651001	9x12	2,5-25	0,10	1-18	283	121	42	24	20	11 9/64"	4 49/64"	1 21/32"	15/16"	25/32"	



Drive 9x12 mm



For 9x12 mm interchangeable insert tools.

With safety pin



The safety pin of the insert tools enables safe working and fast tool change.

For right and left direction



The Click-Torque wrenches for insert tools are suitable for right-hand and left-hand uses.

7770 Open end insert, 9x12 mm



Application: Hexagon screw heads or nuts

Drive: 9x12 mm; for torque wrenches of the Click-Torque X and XP series with 9x12 mm holder

Design: Forged, chrome vanadium steel, matt chrome plated; with safety pin

	mm	mm	mm	mm	mm
05078600001	7	39,0	22,0	22,0	5,0
05078601001	8	39,0	22,0	22,0	5,0
05078602001	9	39,0	22,0	22,0	5,0
05078603001	10	39,0	22,0	22,0	5,0
05078604001	11	39,0	22,0	22,0	5,0
05078605001	12	39,0	22,0	22,0	5,0
05078606001	13	41,0	24,0	30,0	7,0
05078607001	14	41,0	24,0	30,0	7,0
05078608001	15	41,0	24,0	30,0	7,0
05078609001	16	41,0	24,0	30,0	7,0
05078610001	17	41,0	24,0	30,0	7,0
05078611001	18	41,0	24,0	30,0	7,0
05078612001	19	41,0	24,0	30,0	7,0



400 Hex Torque-indicator



Application: Hexagon socket screws

Pre-set torque: 4,0 Nm, 5,0 Nm; fixed pre-set

Accuracy: ±10 %. Reliable slipping mechanism and acoustic signal when reaching the set torque.

Blade: Round

Design: Hex-Plus, brushed chrome-plated finish, Black Point

Handle: T-handle, multi-component

		Nm					
05005080001	4,0	4,0	60	48	100	2 3/8"	7,0
05005081001	5,0	5,0	60	48	100	2 3/8"	7,0





781 B 3/8" Connection parts



Application: For 1/2" square head socket wrench inserts with ball lock

Design: For manual and machine-operated tools (non-impact), with ball stop groove, knurling at the rear end for manageability during manual use; chrome-vanadium, brushed chrome-plated finish

Drive: 3/8" socket square head

					
	Art.No.	mm			
05042673001	781 B/C	1/2"	36,0	1 27/64"	3/8"

¹⁾ Available from November 2021

Excess-load signal



Distinctly audible and noticeable excess-load signal when the pre-set torque is reached.

950/9 Hex-Plus 6 L-key set, metric, BlackLaser



9-piece set in a two-component clip

Application: Hexagon socket screws

Design: BlackLaser surface

Tip: Hex-Plus, ball-end hexagon on long arm

05022086001	
○	950 PKL BM 1x 1,5x90 ¹⁾ ; 1x 2,0x100; 1x 2,5x112; 1x 3,0x126; 1x 4,0x140; 1x 5,0x160; 1x 6,0x180; 1x 8,0x200; 1x 10,0x219

¹⁾ Regular hexagon

950/9 Hex-Plus 1 L-key set, metric, chrome-plated



9-piece set in a two-component clip

Application: Hexagon socket screws

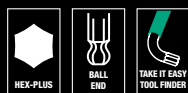
Design: Chrome-plated

Tip: Hex-Plus, ball-end hexagon on long arm

05022087001	
○	950 PKL 1x 1,5x90 ¹⁾ ; 1x 2,0x100; 1x 2,5x112; 1x 3,0x126; 1x 4,0x140; 1x 5,0x160; 1x 6,0x180; 1x 8,0x200; 1x 10,0x219

¹⁾ Regular hexagon

950/9 Hex-Plus Multicolour 1 SB Multicolour L-key set, metric, BlackLaser



9-piece set in a two-component clip

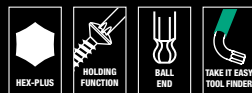
Application: Hexagon socket screws

Design: BlackLaser surface, durable plastic sleeve. The contrasting inscriptions on the colour-coded sleeves mean that it is easy to recognise the correct sizes and this makes it simpler to find the right tool.

Tip: Hex-Plus, ball-end hexagon on long arm

				4013288
05073593001	950 SPKL Multicolour	○	1x 1.5x90; 1x 2.0x101; 1x 2.5x112; 1x 3.0x123; 1x 4.0x137; 1x 5.0x154; 1x 6.0x172; 1x 8.0x195; 1x 10.0x224	165688

950/9 Hex-Plus Multicolour HF 1 L-key set, metric, BlackLaser, with holding function



9-piece set in a two-component clip

Application: Hexagon socket screws

Design: BlackLaser surface, durable plastic sleeve. The contrasting inscriptions on the colour-coded sleeves mean that it is easy to recognise the correct sizes and this makes it simpler to find the right tool.

Tip: Hex-Plus, ball-end hexagon on long arm, holding function for hexagon socket screws, sizes: 1,5, 2,0 and 2,5 without holding function

05022210001		
○	950 SPKL Multicolour	1x 1,5x90; 1x 2,0x101; 1x 2,5x112
○	950 SPKL HF Multicolour	1x 3,0x123; 1x 4,0x137; 1x 5,0x154; 1x 6,0x172; 1x 8,0x195; 1x 10,0x224



Hex-Plus



Hexagon screws can endure a problem because the contact surfaces delivering the power from the conventional tool, is transferred to the screw via very small surface areas. The consequence: the screw can become damaged (rounding out). Hex-Plus tools have a greater contact surface that

prevents this from happening! At the same time, as much as 20 % more torque can be applied. Good to know: Hex-Plus tools fit into every standard hexagon socket screw!



L-keys with retaining function for hexagon socket screws



The clamping of the screw is achieved by a flexible locking ball. The holding function is especially helpful in confined, hard-to-reach spaces, where there is no room for a second hand to secure the screw on the tool.

950/9 Hex-Plus 3 L-key set, metric, chrome-plated



9-piece set in a two-component clip

Application: Hexagon socket screws

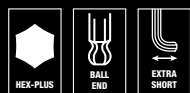
Design: Chrome-plated

Tip: Hex-Plus, ball-end hexagon on long arm

05133163001	
○	950 PKS 1x 1,5x50 ¹⁾ ; 1x 2,0x56; 1x 2,5x63; 1x 3,0x71; 1x 4,0x80; 1x 5,0x90; 1x 6,0x100; 1x 8,0x112; 1x 10,0x125

¹⁾ Regular hexagon

950/9 Hex-Plus 4 L-key set, metric, chrome-plated



9-piece set in a two-component clip

Application: Hexagon socket screws

Blade: Chrome plated, with extra short arm for use on screws that are difficult to access

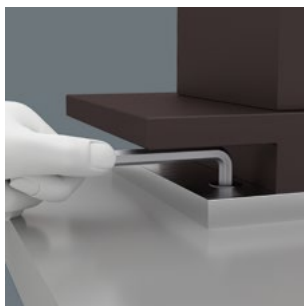
Tip: Hex-Plus, ballpoint hexagon on long arm

05073594001	
○	950 PKLS 1x 1,5x90 ¹⁾ ; 1x 2,0x100; 1x 2,5x112; 1x 3,0x126; 1x 4,0x140; 1x 5,0x160; 1x 6,0x180; 1x 8,0x200; 1x 10,0x219

¹⁾ Regular hexagon



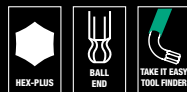
With extra short arm



alteration in the hardening during the shortening process.

All users will recognise the need to saw or grind down L-keys to make them shorter for particularly confined screwdriving jobs. This has the disadvantage that they no longer have any corrosion protection at the separation point and secondly, they can become "soft" and therefore useless due to an

950/9 Hex-Plus Multicolour 2 L-key set, metric, BlackLaser



9-piece set in a two-component clip

Application: Hexagon socket screws

Design: BlackLaser surface, durable plastic sleeve. The contrasting inscriptions on the colour-coded sleeves mean that it is easy to recognise the correct sizes and this makes it simpler to find the right tool.

Tip: Hex-Plus, ball-end hexagon on long arm

05133164001	
○	950 SPKS Multicolour 1x 1,5x50; 1x 2,0x56; 1x 2,5x63; 1x 3,0x71; 1x 4,0x80; 1x 5,0x90; 1x 6,0x100; 1x 8,0x112; 1x 10,0x125

967/9 TX Multicolour HF 1 L-key set with holding function



9-piece set in a two-component clip

Application: TORX® socket screws

Design: Round, zinc-phosphated, durable plastic sleeve. The contrasting inscriptions on the colour-coded sleeves mean that it is easy to recognise the correct sizes and this makes it simpler to find the right tool.

Tip: Holding function for TORX® screws made according to Acument Intellectual Properties specifications, BlackLaser surface, durable plastic sleeve. The contrasting inscriptions on the colour-coded sleeves mean that it is easy to recognise the correct sizes and this makes it simpler to find the right tool.

05024179001	
⊗	967 SL TORX® HF 1x TX 8x76; 1x TX 9x79; 1x TX 10x85; 1x TX 15x90; 1x TX 20x96; 1x TX 25x104; 1x TX 27x112; 1x TX 30x122; 1x TX 40x132

967/9 TX HF 1 L-key set with holding function, BlackLaser



9-piece set in a two-component clip

Application: TORX® socket screws

Design: Round

Tip: Holding function for TORX® screws made according to Acument Intellectual Properties specifications, BlackLaser surface

05024244001	
	967 L TORX® HF 1x TX 8x76; 1x TX 9x79; 1x TX 10x85; 1x TX 15x90; 1x TX 20x96; 1x TX 25x104; 1x TX 27x112; 1x TX 30x122; 1x TX 40x132

967/9 TX XL Multicolour HF 1 L-key set with holding function, long



9-piece set in a two-component clip

Application: TORX® socket screws

Design: Zinc-phosphated, durable plastic sleeve. The contrasting inscriptions on the colour-coded sleeves mean that it is easy to recognise the correct sizes and this makes it simpler to find the right tool.

Tip: Holding function for TORX® screws made according to Acument Intellectual Properties specifications

	967 SXL TORX® HF Multicolour 1x TX 8x90; 1x TX 9x101; 1x TX 10x112; 1x TX 15x123; 1x TX 20x137; 1x TX 25x154; 1x TX 27x172; 1x TX 30x195; 1x TX 40x224
--	---

967/9 TX XL Multicolour 1 Multicolour L-key set for TORX® screws, long



9-piece set in a two-component clip

Application: TORX® socket screws

Design: Round, zinc-phosphated, durable plastic sleeve. The contrasting inscriptions on the colour-coded sleeves mean that it is easy to recognise the correct sizes and this makes it simpler to find the right tool.

Tip: TORX® on short arm, TORX® ball end on long arm, TX 8, TX 9, TX 10: without ball-end at the long arm

05024480001	
	967 SXL TORX® Multicolour 1x TX 8x90; 1x TX 9x101; 1x TX 10x112
	967 SPKXL TORX® Multicolour 1x TX 15x123; 1x TX 20x137; 1x TX 25x154; 1x TX 27x172; 1x TX 30x195; 1x TX 40x224

967/9 TX B0 Multicolour 1 SB L-key set for tamper-proof TORX® screws, BlackLaser



9-piece set in a two-component clip. For recessed screws, it's often advantageous for the screw to be held on the L-key by magnetic force. The Wera clips with magnetiser/demagnetiser enable a magnetisation/demagnetisation of L-keys in a flash.

Application: TORX® socket screws with and without pin (B0 = bore hole)

Design: BlackLaser, durable plastic sleeve. The contrasting inscriptions on the colour-coded sleeves mean that it is easy to recognise the correct sizes and this makes it simpler to find the right tool.

Tip: TORX® on short arm, TORX® ball-end on long arm

05073599001	967 SPKL TORX® B0 Multicolour	1x TX 8x76 ¹⁾ ; 1x TX 9x79 ¹⁾ ; 170125 1x TX 10x85 ²⁾ ; 1x TX 15x90; 1x TX 20x96; 1x TX 25x104; 1x TX 27x112; 1x TX 30x122; 1x TX 40x132
-------------	--------------------------------------	--

¹⁾ Product without bore hole at the short and without ball-end at the long arm.

²⁾ Product without ball-end at the long arm.



454 HF T-handle hexagon screwdriver Hex-Plus with holding function



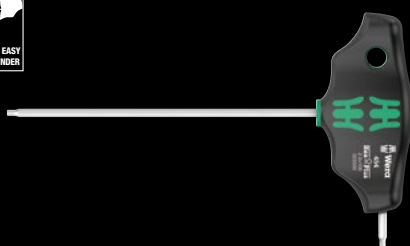
Application: Hexagon socket screws

Blade: Hexagon

Design: With long and short arm, Hex-Plus, bevelled, matte chrome-plated, with holding function for hexagon socket screws on the long arm

Handle: T-shape, 2 components, with hole for hanging. With Take it easy tool finder: Colour coding by profiles (blue = hexagon socket) and size stamping.

454 T-handle hexagon screwdriver Hex-Plus



Application: Hexagon socket screws

Blade: Round

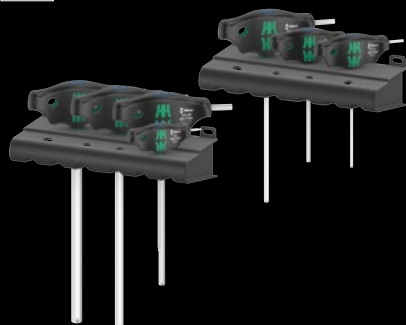
Design: Hex-Plus, chamfered, chrome-plated

Handle: T-shape, 2 components, with hole for hanging. With Take it easy tool finder: Colour coding by profiles (blue = hexagon socket) and size stamping.

	⌀	mm	mm	mm	mm	mm
05023330001	2	100	12	32	65	4"
05023332001	2,5	100	12	32	65	4"

	⌀	mm	mm	mm	mm	mm
05023334001	3	100	15	38	77	4"
05023338001	4	100	15	38	77	4"
05023339001	4	150	15	38	77	6"
05023340001	4	200	15	38	77	8"
05023342001	5	100	20	49	99	4"
05023343001	5	150	20	49	99	6"
05023344001	5	200	20	49	99	8"
05023346001	6	100	20	49	99	4"
05023347001	6	150	20	49	99	6"
05023348001	6	200	20	49	99	8"
05023350001	7	200	20	49	99	8"
05023351001	8	100	20	49	99	4"
05023352001	8	150	20	49	99	6"
05023353001	8	200	20	49	99	8"
05023354001	10	100	20	49	99	4"
05023355001	10	200	20	49	99	8"

454/7 HF Set 1 screwdriver set T-handle screwdrivers Hex-Plus with holding function

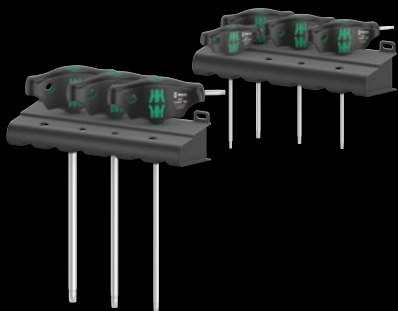


Application: Hexagon socket screws, with holding function on the long arm from size 3

Design: With Take it easy tool finder: colour coding according to profile (blue = hexagon socket) and size stamp. 7-piece set and 2 racks in display carton

05023450001		
○	454	1x 2,5x100
○	454 HF	1x 3x100; 1x 4x100; 1x 5x150; 1x 6x150; 1x 8x200; 1x 10x200
	Rack	2x 190,0x50,0

467/7 TORX® HF Set 1 screwdriver set T-handle TORX® screwdrivers with holding function



Application: TORX®, with holding function on the long arm for TORX® screws as per specification "Acument Intellectual Properties"

Design: With Take it easy tool finder: colour coding according to profile (green = TORX®) and size stamping. 7-piece set and 2 racks in display carton

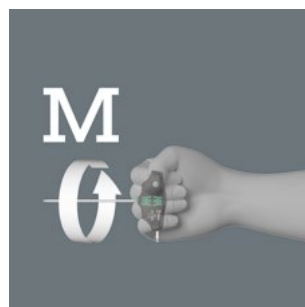
05023452001		
⊕	467 TORX® HF	1x TX 10x100; 1x TX 15x100; 1x TX 20x100; 1x TX 25x100; 1x TX 30x200; 1x TX 40x200; 1x TX 45x200
	Rack	2x 190,0x50,0

Second arm



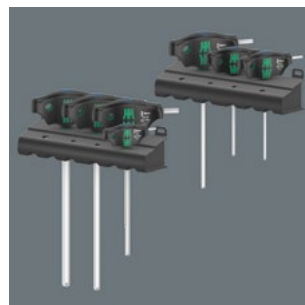
The additional short arm, which emerges laterally from the handle, allows the transmission of extremely high torques by using the long arm as a lever.

High torque transfer



By using the blade as an extension of your lower arm you can transfer particularly high torque.

With useful plastic rack



Including useful rack for well-arranged storage of the screwdrivers.



Holding function (HF) for hexagon socket screws



A resilient ball ensures the hexagon socket screw to be clamped on the tool tip. Especially helpful in hard to reach areas where you can not use your other hand to hold the screw.



Holding function



The Joker's holding function means that nuts and bolts can be held in the jaw and easily positioned where they are needed. Fastening on to the thread can then be done quickly and safely, thanks to the innovative special stop-plate which holds the fastener. No more time-wasting searches

for dropped nuts and bolts! After applying and positioning the nut or bolt, fastening can begin immediately – no additional tools required.

Double-hex geometry



The Joker's clever double-hex geometry delivers a very positive connection with nuts or bolts – it's a perfect fit. And the exchangeable, hardened metal gripping plate in the Joker's mouth literally bites itself into the bolt, with its extremely hard tips. Both features combine to prevent slipping, even at higher torque.

6000 Joker Ratcheting combination wrenches

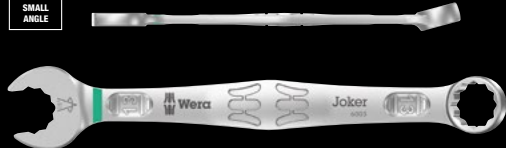


Application: Hexagonal nuts or bolts

Design: Ratcheting combination wrench

		mm	mm	mm	mm	mm	mm
05073268001		8	144	20	5,5	18	7
05073270001		10	159	22	5,5	21	7,2
05073271001		11	165	25	6,3	22	7,5
05073272001		12	170,7	26,3	6,6	25	8,5
05073273001		13	177	27,3	7	25	8,6
05073274001		14	188	29,3	7,5	28	9,2
05073275001		15	200	32,3	7,8	28,5	9,2
05073276001		16	212	35	8,2	32,7	10,5
05073277001		17	224	37,2	8,5	32,7	10,5
05073278001		18	235	39	9	33,8	11
05073279001		19	246	42	9,5	34,8	11

6003 Joker combination wrench

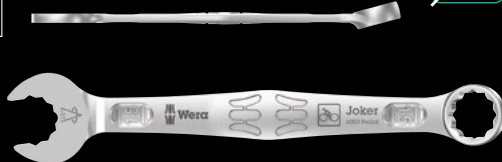


Application: Hexagon screw heads and bolts

Design: Combination wrench; open-end offset by 7.5°, ring side pivoted by 15°; with Take it easy tool finder: colour coding by size

		mm	mm	mm	mm	mm	mm
05020190001	Orange	5,5	105	16	4	10	6
05020198001	Blue	6	105	16	4	10	6
05020199001	Yellow	7	110	17,7	4,2	11,5	6
05020200001	Pink	8	115	19	4,5	12,5	7
05020219001	Green	9	120	21	4,8	13,5	7
05020201001	Yellow	10	125	22	5	15	7
05020202001	Light Blue	11	135	24,5	5	17	8
05020203001	Black	12	148	26	5,5	18	8,5
05020204001	Teal	13	160	27	6	19	8,5
05020205001	Purple	14	167	29	6	20	8,5
05020206001	White	15	174	32	6	22	8,5
05020207001	Dark Blue	16	182	35	6,5	23	10
05020208001	Red	17	190	38	6,5	24,5	10
05020209001	Light Green	18	210	39	7,5	26	11,5
05020210001	Dark Blue	19	230	42	7,5	27,5	11,5
05020500001	Pink	20	230	45	7,5	29	13
05020501001	Green	21	260	47	7,5	30	13
05020502001	Yellow	22	260	49	7,5	31,5	13
05020503001	Light Blue	24	280	53	8	36	14
05020504001	Black	27	300	60	8,5	40	14,5
05020505001	Teal	30	330	66	9	43	16
05020506001	Purple	32	360	70	9,5	45,5	16,5
05020507001	Dark Blue	36	460	80	10	50,5	18

6003 Joker Pedal ring spanner



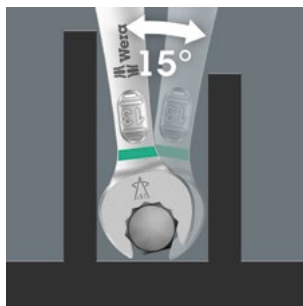
Application: Hexagon bolts and screw heads

Design: Ring spanner, extra-flat mouth side; mouth side pivoted by 7.5°; ring side pivoted by 15°; with Take it easy tool finder: colour coding by size

		mm	mm	mm	mm	mm	mm
05020221001		15	174	32	4,5	22	8,5



Joker 6003: For very tight spaces



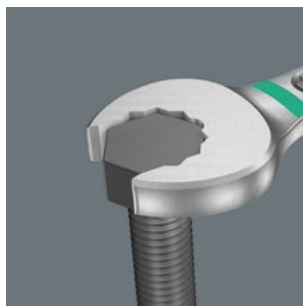
The Joker 6003 combination wrench with its special mouth geometry – an open-end offset by 7.5° and the double hexagon profile – doubles the placement possibilities when repeatedly turning the wrench 180° around the longitudinal axis. Bolts and screw heads can be "accessed" every 15°. The Joker 6003 will automatically find the respective placement point after every turn.

For pivoting angles under 30°



Thanks to the mouth side pivoted by 7.5°, double hexagon geometry and an adjusted application method (placement – screwdriving – turning – replacement – screwdriving – turning, etc), even screwdriving challenges allowing a pivoting angle of less than 30° can be solved.

Double-hex geometry



The double hexagon geometry on the mouth and ring sides secures the positive connection with the screw head or bolt and reduces the risk of slipping.



6003 Joker Pedal



The extra thin pedal ring spanner (6003 Joker 15 Pedal) is ideal for narrow installation spaces.

6004 Joker S self-setting spanner



Application: Hexagon screw heads and bolts with wrench size 10-13 (metric) or $\frac{7}{16}$ "- $\frac{1}{2}$ " (imperial)

Design: Self-setting spanner with ratchet function; size-adjustable mouth side, parallel smooth jaws; with 30° return angle due to the corner-width rectangular prisms in the mouth; hole for hanging

	mm	mm	mm	
05020100001	10-13	$\frac{7}{16}$ "- $\frac{1}{2}$ "	154	10

6004 Joker 4 set 1 self-setting spanner set



Self-setting spanner set
4-piece set
In robust folding pouch

05020110001	
	6004 Joker XS 1x 7-10 ($\frac{1}{4}$ "- $\frac{3}{8}$ ")x117
	6004 Joker S 1x 10-13 ($\frac{7}{16}$ "- $\frac{1}{2}$ ")x154
	6004 Joker M 1x 13-16 ($\frac{1}{2}$ "- $\frac{5}{8}$ ")x188
	6004 Joker L 1x 16-19 ($\frac{5}{8}$ "- $\frac{3}{4}$ ")x224

6004 Joker M self-setting spanner



Application: Hexagon screw heads and bolts with wrench size 13-16 (metric) or $\frac{1}{2}$ "- $\frac{5}{8}$ " (imperial)

Design: Self-setting spanner with ratchet feature; size-adjustable mouth side, parallel smooth jaws, with 30° return angle due to the corner-width rectangular prisms in the mouth; hole for hanging

	mm	mm	mm	
05020103001	13-16	$\frac{1}{2}$ "- $\frac{5}{8}$ "	188	12,4



Joker 6004: Automatically and continuously self-setting



With its automatically and continuously gripping parallel jaws the Joker spanner 6004 covers all dimensions in the respective field of application. The tool automatically finds the required size when placed on the bolt or screw, no setting required.



Joker 6004: Ratchet mechanism for fast work



The ratchet function in the mouth sees to fast and consistent screwdriving without removing the tool.

Tool-Check PLUS



28 bits, 1 bit-holding screwdriver 813 suitable for the attachment of bits with 1/4" hexagon drive as per DIN ISO 1173-C 6.3 and Wera connection series 1, 1 Rapidaptor bit holder, 1 adaptor 870/1 (1/4" hexagon to 1/4" square), 7 sockets (1/4"); 1 Wera Bit Ratchet Zyklop Mini 1, drop-forged full steel design suitable for the attachment of bits with 1/4" hexagon drive as per DIN ISO 1173-C 6.3 and E 6.3 and Wera connection series 1 and 4; the use of 1/4" sockets is also possible with the application of the Wera adaptor 870/1

05056490001		
8001 A	1x 1/4"x87,0	
813	1x 1/4"x78	
889/4/1 K	1x 1/4"x50	
870/1	1x 1/4"x25 ¹⁾	
8790 HMA	1x 5,5x23,0; 1x 6,0x23,0; 1x 7,0x23,0; 1x 8,0x23,0; 1x 10,0x23,0; 1x 12,0x23,0; 1x 13,0x23,0	
851/1 TZ PH	2x PH 1x25; 3x PH 2x25; 1x PH 3x25	
855/1 TH PZ	1x PZ 1x25; 3x PZ 2x25; 1x PZ 3x25	
867/1 TZ TORX®	1x TX 10x25; 1x TX 15x25; 1x TX 20x25; 1x TX 25x25; 1x TX 30x25; 1x TX 40x25	
867/1 Z TORX® B0	1x TX 10x25; 1x TX 15x25; 1x TX 20x25; 1x TX 25x25; 1x TX 30x25	
840/1 Z Hex-Plus	1x 3,0x25; 1x 4,0x25; 1x 5,0x25; 1x 6,0x25; 1x 8,0x25	
800/1 TZ	1x 1,0x5,5x25	

¹⁾ With friction ball; for manual nut spinner sockets

The Zyklop Metal ratchets

Slim design



Forged, full metal ratchet (chrome-molybdenum) that is extremely robust with a long service life; slim design to enable work in very confined spaces.

Ball lock



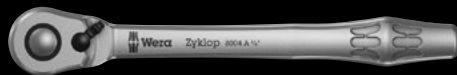
The ball lock ensures sockets and accessories are securely fitted, providing increased safety during operation. A short press on the release button allows the tool to be changed quickly.

Small return angle



Fine-pitched with 72 teeth for a return angle of only 5°

8004 A Zyklop Metal Ratchet with switch lever and 1/4" drive



Application: 1/4" square sockets as well as for 1/4" adaptors with square drive, with ball locking device

Design: Forged, full metal ratchet (chrome-molybdenum) that is extremely robust with a long service life; slim design to enable work in very confined spaces; fine-tooth mechanism with 72 teeth for a return angle of only 5°; switch lever for convenient change of direction; secure socket locking function

05004004001				
	mm	mm	mm	mm
	1/4"	141	19	22

8004 B Zyklop Metal Ratchet with switch lever and 3/8" drive



Application: 3/8" square sockets as well as for 3/8" adaptors with square drive, with ball locking device

Design: Forged, full metal ratchet (chrome-molybdenum) that is extremely robust with a long service life; slim design to enable work in very confined spaces; fine-tooth mechanism with 72 teeth for a return angle of only 5°; switch lever for convenient change of direction; secure socket locking function

05004034001				
	mm	mm	mm	mm
	3/8"	222,0	26	29

8000 A SB Zyklop Speed Ratchet with 1/4" drive



Application: 1/4" square sockets and 1/4" adaptors with square drive, equipped with ball lock

Design: Flywheel design and easy-to-grip free-turning sleeve for faster work, swivel ratchet head, defined lock positions at 0° and 90° to the left and right as well as at 15° before 90° inwards, at 0° it can be used like a conventional screwdriver, pushbutton release, left/right switchover, fine-tooth design, small return angle of 5°

Handle: Multi-component Kraftform handle ensures minimum fatigue

05073260001	8000 A	4013288
	1x 1/4"x152.0	128034

8100 SA 6 Zyklop Speed Ratchet Set, 1/4" drive, metric



28-piece set; in a surface-preserving, compact and extremely robust textile box; low volume and weight for simplified mobility

1 Zyklop Speed Ratchet with 1/4" drive, 9 Zyklop sockets, 1 Zyklop extension (long) with free-turning sleeve, 1 wobble extension, 1 adaptor with quick-release chuck, 15 bits

05004016001		
□	8000 A	1x 1/4"x152,0
●	8790 HMA	1x 5,0x23,0; 1x 5,5x23,0; 1x 6,0x23,0; 1x 7,0x23,0; 1x 8,0x23,0; 1x 10,0x23,0; 1x 11,0x23,0; 1x 12,0x23,0; 1x 13,0x23,0
□□	8794 LA	1x 1/4"x150,0
□□	8794 A	1x 1/4"x56,0
□□	8784 A1	1x 1/4"x1/4"x37,0
+	851/4 TZ PH	1x PH 1x50; 1x PH 2x50; 1x PH 3x50
+	855/4 TZ PZ	1x PZ 1x50; 1x PZ 2x50
+	867/4 Z TORX®	1x TX 10x50; 1x TX 15x50; 1x TX 20x50; 1x TX 25x50; 1x TX 27x50; 1x TX 30x50
○	840/4 Z Hex-Plus	1x 3,0x50; 1x 4,0x50; 1x 5,0x50; 1x 6,0x50
	K120	1x 50,0x120,0



The Zyklop Speed ratchet

Pivots freely



The ratchet head pivots freely and can be locked into any defined position by using the slide switch that is positioned on either side. It is even possible to work in very confined and difficult-to-access areas with enhanced hand clearance. The predefined locking at 0°, 15° and 90°, both to the right and

left, ensure safe working without any slipping of the ratchet head.



Fast movers



The Zyklop Speed ratchets are really fast movers. The gyrating mass design means that screw-driving is accelerated. The rotation-symmetric structure of the Kraftform handle and the free-turning sleeve reinforce this rapid twisting process, particularly when the ratchet does not engage due to too little resistance in the thread.

Textile boxes



The textile boxes offer dramatically improved portability, and are space-saving to boot! This means you can now carry the same collection of tools, in a much more compact and comfortable package. The hassle of running back and forth for the right tools has now become a thing of the past.

And the much lower weight of a set makes carrying more convenient than ever before. The textile box including the tool will even survive a fall undamaged.

8006 C Zyklop Hybrid Ratchet with switch lever and 1/2" drive



Application: 1/2" square sockets as well as for 1/2" adaptors with square drive, with ball locking device

Design: Fine-tooth mechanism with 72 teeth for a return angle of only 5°; switch lever for convenient change of direction; secure socket locking function

Handle: Multi-component Kraftform handle for optimum pressure and tensile loads, handle end designed for connection of Zyklop Hybrid extension 8797 C

	mm	mm	mm	mm
05003780001	1/2"	281,0	34	37

Kraftform Micro Big Pack 1 screwdriver set for electronic applications

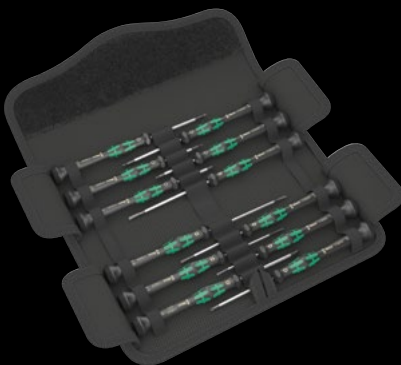


Take it easy tool finder: colour coding according to profile and size stamp.

Application: Slotted screws, Phillips-head, Phillips-Recess, TORX® Internal Transducers (TX 5, TX 6, TX 7, TX 8, TX 10 with holding function), Internal TORX PLUS® IPR, internal and external hex and Microstix® screws, 1 chip lifter to remove stuck components on circuit boards after soldering

Design: 25 pieces; in roll pouch; suitable for Wera 2go

Kraftform Micro 12 Universal 1 screwdriver set for electronic applications



Take it easy tool finder: colour coding according to profile and size stamp.

Application: Slotted, Phillips, TORX® and hexagon socket screws

Content: 12-piece set, in a belt pouch

	mm	mm	mm	mm
05073675001	1/2"	281,0	34	37

¹⁾ Optimised for Asian PH screws

²⁾ Size 0 modified according to JCS 0 (Japanese Camera Industrial Standard)

	mm	mm	mm	mm
05134000001	1/2"	281,0	34	37

¹⁾ Optimised for Asian PH screws

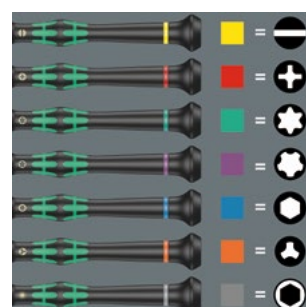
²⁾ On the output side, the blade is turned to a nominal length of 10 mm

³⁾ Size 0 modified according to JCS 0 (Japanese Camera Industrial Standard)

⁴⁾ Without bore hole



"Take it easy" Tool Finder



Screwdrivers with "Take it easy" tool finder: colour coding according to profile and size stamp.

334 SK/6 Rack Screwdriver set Kraftform Plus Lasertip and rack



Lasertip hexagon blades and rack. Take it easy tool finder: colour coding according to profile and size stamp.

Application: Slotted and Phillips screws

Content: 6-piece set and rack in display carton

05007680001	
+	350 SK PH 1x PH 1x80; 1x PH 2x100
-	334 SK 1x 0,6x3,5x75; 1x 0,8x4,0x90; 1x 1,0x5,5x100; 1x 1,2x6,5x125



Lasertip



A precisely-focused laser creates a sharp-edged surface structure. This laser treatment results in an edge hardness of up to 1000 HV 0.3. Wera Lasertip "bites" itself into the screw head and prevents any slips out of the recess. It is available for screwdrivers for slotted, Phillips and Pozidriv screws.



Hexagonal blade and bolster



Hexagonal blade and bolster for higher torque transfer.

Kraftform Kompakt 20 Tool Finder 2 with pouch



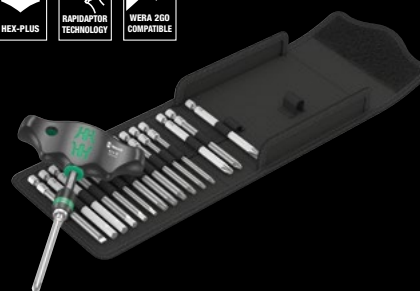
Application: Suitable for 1/4" DIN ISO 1173-C 6.3 and E 6.3 hexagon socket insert bits and Wera Series 1 and 4

Design: Attachment, telescopic, Rapidaptor rapid-in, rapid-out, rapid-spin, chuck-all and single-hand technology; "Take it easy" tool finder: Output colour coding and large stamp to enable the desired bit to be easily located.

Handle: Kraftform with non-roll feature, multi-component, integrated magazine

05051017001	
⊙	889/4 R 1x 1/4"x100
+	851/1 BTZ PH 1x PH 1x25; 1x PH 2x25
+	855/1 BTZ PZ 1x PZ 1x25; 1x PZ 2x25
⊙	867/1 TORX® 1x TX 20x25; 1x TX 25x25
+	851/4 Z PH 1x PH 1x89; 1x PH 2x89
+	855/4 Z PZ 1x PZ 1x89; 1x PZ 2x89
⊙	867/4 Z 1x TX 20x89; 1x TX 25x89
	TORX®
	K70 1x 50,0x70,0

Kraftform Kompakt 400



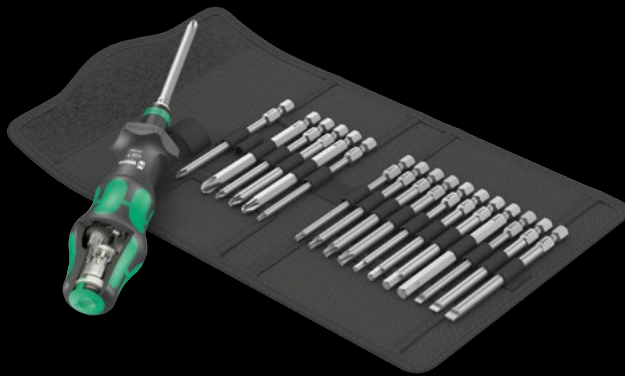
Folding pouch with 89 mm long bits

17-piece set

1 bit handholder 416 R T-handle with Rapidaptor quick-release chuck

05057470001	
⊙	416 R 1x 1/4"x45
+	851/4 Z PH 1x PH 2x89; 1x PH 3x89
+	855/4 Z PZ 1x PZ 2x89; 1x PZ 3x89
⊙	867/4 Z 1x TX 10x89; 1x TX 15x89; 1x TX 20x89; 1x TX 25x89; 1x TX 30x89; 1x TX 40x89
⊙	840/4 Z 1x 3,0x89; 1x 4,0x89; 1x 5,0x89; 1x 6,0x89; 1x 8,0x89
	Hex-Plus
+	800/4 Z 1x 1,0x5,5x89
	K120 1x 50,0x120,0

Kraftform Kompakt Turbo 1



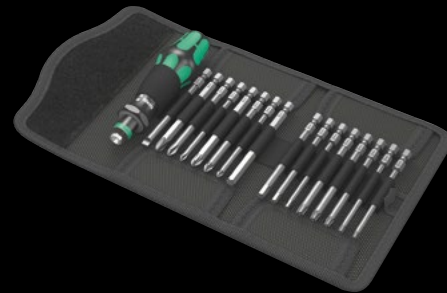
Folding pouch with 89 mm long bits

19-piece set

1 bit-holding Kraftform Turbo with Rapidaptor quick-release chuck

05057482001		
826 T	1x 1/4"x146	Kraftform Turbo
851/4 Z PH	1x PH 1x89; 1x PH 2x89; 1x PH 3x89	
855/4 Z PZ	1x PZ 1x89; 1x PZ 2x89; 1x PZ 3x89	
867/4 Z	1x TX 10x89; 1x TX 15x89; 1x TX 20x89;	
TORX®	1x TX 25x89; 1x TX 30x89	
840/4 Z Hex-Plus	1x 3,0x89; 1x 4,0x89; 1x 5,0x89; 1x 6,0x89	
800/4 Z	1x 0,8x4,0x89; 1x 1,0x5,5x89;	
	1x 1,2x6,5x89	
K120	1x 50,0x120,0	

Kraftform Kompakt 60



Pouch with 89 mm bits

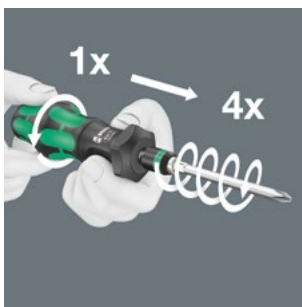
17-piece set

1 Kraftform bitholding screwdriver 816 R with Rapidaptor quick-release chuck

05059295001		
816 R	1x 1/4"x119	
851/4 Z PH	1x PH 1x89; 1x PH 2x89; 1x PH 3x89	
855/4 Z PZ	1x PZ 1x89; 1x PZ 2x89; 1x PZ 3x89	
867/4 Z	1x TX 10x89; 1x TX 15x89; 1x TX 20x89;	
TORX® B0	1x TX 25x89; 1x TX 30x89	
800/4 Z	1x 1,0x5,5x89	
840/4 Z Hex-Plus	1x 3,0x89; 1x 4,0x89; 1x 5,0x89; 1x 6,0x89	
K70	1x 50,0x70,0	



Faster screwdriving



The construction of the Kraftform Turbo allows the speed of manual screwdriving to be quadrupled, especially for smooth couplings - without electricity!

With and without Turbo



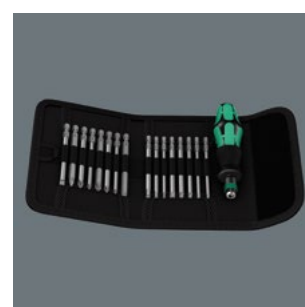
The turbo function can be activated as needed by pressing a button. Turning it off is recommended for tightening and loosening with high torque, e.g. for screw connections in wood as well as for fine adjustments.

Handle/interchangeable blade system



Thanks to the Rapidaptor bit holder, the Kraftform Turbo can be used with all conventional 1/4" bits.

Storage and transport



The tools can be stored a robust pouch. In this way the tool is always to hand.

Bit-Check 30 Universal 1



1 bit holder Rapidaptor with quick-release chuck, 29 bits, Torsion-style (T) design to reduce premature wear, tough (Z), for universal use, extra-hard (H).

05056440001		
889/4/1 K	1x 1/4"x50	
851/1 TZ PH	2x PH 1x25; 3x PH 2x25; 1x PH 3x25	
855/1 TH PZ	2x PZ 1x25; 3x PZ 2x25; 1x PZ 3x25	
867/1 TZ TORX®	1x TX 10x25; 1x TX 15x25; 1x TX 20x25; 1x TX 25x25; 1x TX 30x25; 1x TX 40x25	
867/1 Z TORX® B0	1x TX 10x25; 1x TX 15x25; 1x TX 20x25; 1x TX 25x25; 1x TX 30x25	
800/1 TZ	1x 1,0x5,5x25	
840/1 Z Hex-Plus	1x 3,0x25; 1x 4,0x25; 1x 5,0x25; 1x 6,0x25; 1x 8,0x25	

Bit-Check 30 Zyklop Mini 1

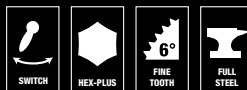


28 bits, 1 Rapidaptor bit holder, 1 adaptor 870/1 (1/4" hexagon to 1/4" square), 1 Wera Bit Ratchet Zyklop Mini 1, drop-forged full steel design, suitable for 1/4" hex bits as per DIN ISO 1173-C 6.3 and E 6.3 and Wera series 1 and 4

05073640001		
8001 A	1x 1/4"x87,0	
870/1	1x 1/4"x25 ¹⁾	
889/4/1 K	1x 1/4"x50	
851/1 TZ PH	2x PH 1x25; 3x PH 2x25; 1x PH 3x25	
855/1 TH PZ	1x PZ 1x25; 3x PZ 2x25; 1x PZ 3x25	
867/1 TZ TORX®	1x TX 10x25; 1x TX 15x25; 1x TX 20x25; 1x TX 25x25; 1x TX 30x25; 1x TX 40x25	
867/1 Z TORX® B0	1x TX 10x25; 1x TX 15x25; 1x TX 20x25; 1x TX 25x25; 1x TX 30x25	
800/1 TZ	1x 1,0x5,5x25	
840/1 Z Hex-Plus	1x 3,0x25; 1x 4,0x25; 1x 5,0x25; 1x 6,0x25; 1x 8,0x25	

¹⁾With friction ball; for manual nut spinner sockets

Bit-Check 10 Zyklop Mini 1



9 bits, tough, for universal use, 1 Wera Bit Ratchet Zyklop Mini 1, drop-forged full steel design, suitable for 1/4" hex bits as per DIN ISO 1173-C 6.3 and E 6.3 and Wera series 1 and 4. Can also be used with 1/4" sockets by using the Wera socket adaptor 870/1.

05073645001		
8001 A	1x 1/4"x87,0	
851/1 Z PH	1x PH 1x25; 1x PH 2x25	
855/1 Z PZ	1x PZ 1x25; 1x PZ 2x25	
867/1 TORX®	1x TX 15x25; 1x TX 20x25; 1x TX 25x25	
840/1 Z Hex-Plus	1x 4,0x25; 1x 5,0x25	

102 Soft-faced hammer with urethane head sections



Application: Bodyshops, automotive, engineering

Head: Urethane, medium-hard

Handle: Ashwood

	#	mm	mm	mm
05000505001	1	23,0	76,0	250,0
05000510001	2	28,0	87,0	265,0
05000515001	3	33,0	96,0	280,0
05000520001	4	36,0	102,0	290,0
05000525001	5	41,0	108,0	320,0
05000530001	6	51,0	117,0	340,0
05000535001	7	61,0	131,0	380,0

Bottle opener



With original Kraftform handle

	mm
05030005001	145

Wera Star - Magnetizer/Demagnetizer



Application: Simply run the tool down the positive side of the Wera magnetiser/demagnetiser and the tool immediately becomes magnetised and is able to hold the screw securely on the blade. To demagnetise the tool, simply run it down one of the four negative sides.

05073403001	
Wera Star	1x 48,0

Wera 2go 3 Tool Box



1 dimensionally stable and robust Tool Box, empty, equipped with handle for the storage and transport of tools and small parts; high resistance against cuts and stabs; comes with hook and loop fastener zone for docking with the Wera 2go system.

	mm	mm	mm
05004352001	130,0	325,0	80,0

Wera 2go 2 Tool Container

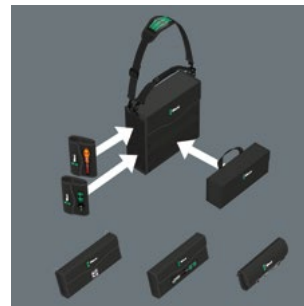


1 dimensionally stable, robust Tool Container with hook and loop fastener system for the attachment of other Wera 2go components as well as Wera textile boxes and pouches with hook and loop fastener zones; high resistance against cuts and stabs; 1 handle and 1 Shoulder Strap with adjustable-width padding, adjustable in length, detachable; 1 removable Tool Quiver with handle and a variable hook and loop fastener partition for a division into as many as 5 inner sections.

05004351001	
Wera 2go Container	1x 355,0x330,0x115,0
Wera 2go 6	1x 38,0x1470,0
Wera 2go 4	1x 165,0x165,0x105,0



Variable thanks to the hook and loop fastener system



The inner and outer hook and loop fastener sections mean that other Wera 2go system components can be just as easily attached as all other Wera tools in boxes and pouches with hook and loop fastener zones. This enables an individual composition of the tools needed for a specific job.

Robust and dimensionally stable



The robust and dimensionally stable material protects the tools carried against damage and moisture and enhances the service life of the tool container.

Clever organisation



The variably adjustable hook and loop fastener partition in the Tool Quiver ensures neat and tidy arrangement of the tools.



Workshop installation,
consulting competence for workplaces:
Contact us. We would be happy
to set up your workshop.

No liability for printing errors or mistakes
shall be assumed.



Wera Werkzeuge GmbH
Korzerter Straße 21-25
D-42349 Wuppertal

Phone: +49 (0)202/40 45-0
E-Mail: info@wera.de
www.wera.de

Wera Tools (UK) LTD.
Railway View
Clay Cross, Chesterfield
Derbyshire, S45 9FR

Phone: +44 (0)1246 / 277756
eMail: queries@wera-tools.co.uk
www.weratools.co.uk

Wera Tools Inc. (North America)
3325 Harvester Rd, Unit 16
Burlington, ON
L7N 3N2, Canada

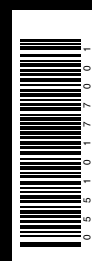
Phone: 1-800-267-55 41
E-Mail: info@weratools.com
www.weratools.com

Wera Tools Australia Pty Ltd.

Phone: +61-435 755 123
E-Mail: mike.sack@wera.de

Wera Tools Japan G.K

Phone: +81 70 4813 1142
E-Mail: frank.yang@wera.de



EN 05 510177 001 - 0056294 - 01 - 2022